



# 2316 Plateau Drive

SAN JOSE

*Communications Hill*

Virtual Tour  
[www.2316PlateauDr.com](http://www.2316PlateauDr.com)

Commuter's dream and ideal starter home! Quick access to Downtown San Jose, 87 FWY, Almaden Expressway, Light Rail and Caltrain. This home features: 1951 sq. ft., 3-bedroom, 2.5-bath, two-level home with front porch, rear patio and 2- car garage.

Highlights include an updated kitchen with granite countertops, dual-pane vinyl windows, updated cabinetry, recessed lighting, newer stainless steel appliances, textured tight-weave carpeting in bedrooms and upstairs hall, dual-vanity sinks in guest and master bathroom, dual cooling system.

The enclosed rear patio provides privacy and a perfect place to relax and BBQ. Community provides greenbelt and community park. Quick and short drive to shopping area and restaurants at the "The Plant" center.

Offered at \$950,000



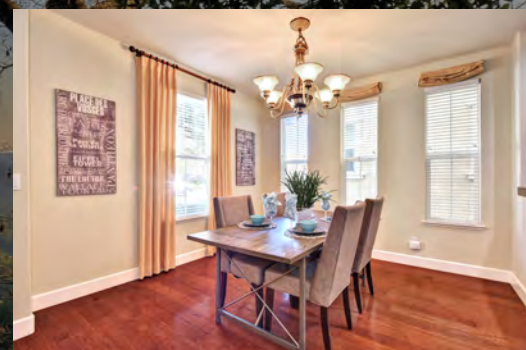
*Elsa Lee Singh*

(415) 290-2705 Cell/Text

ElsaLee88@live.com

[www.ByerlyProp.com](http://www.ByerlyProp.com)

Broker CalBRE #01373643



## *First Rate Locations...*

- Minutes to "The Plant" shopping and dining center
- Close to 87 FWY, Almaden Expressway, Willow Glen, Downtown San Jose
- Short trip to Curtner Avenue VTA and Capitol Caltrain station
- Great nearby schools
- Walk to community playground and greenbelt

Lorem ipsum

## *General features...*

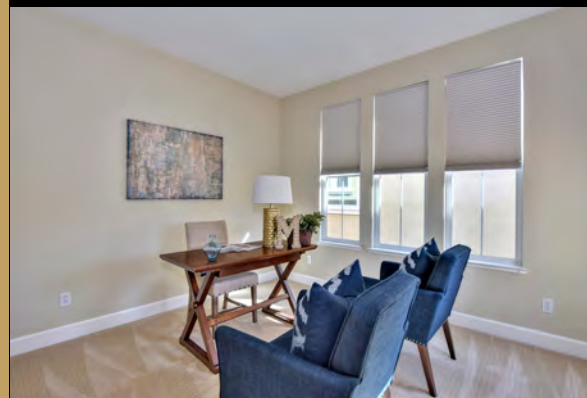
- Built in 2004, lot size 2,204 sq. ft., slab foundation
- Two-level floor plan, one step to entry
- Stucco exterior, tile roof, front porch and rear patio
- Flooring: Engineered hardwood floor and newer carpet
- Recessed lighting, upgraded cabinetry, granite counters, newer SS appliances
- Attached two-car garage with ample storage space

## *Key spaces & features...*

- 6-panel entry door opens to impressive open space living area
- Dining area: ample natural light, beautiful chandelier, opens to kitchen
- Kitchen: Granite countertops, upgraded cabinetry, SS appliances: French door refrigerator, 4-burner gas stove, dishwasher, built-in Microwave
- Master suite: Dual vanity, walk-in shower, soaking tub spacious walk-in closet with organizer
- Guest bedrooms; generous size bedrooms, plenty of closet space

## *Additional notes...*

- Dual-zone cooling system
- Situated on an interior street, guest parking at front of the home
- \$189 Monthly HOA due includes: front yard landscaping, greenbelt, and community park



[www.ByerlyProp.com](http://www.ByerlyProp.com)

Information deemed reliable, but not guaranteed  
Designed, Photographed & Printed by Beyond VT Marketing  
Copyright © 2017 BVT Marketing, Inc. All Rights Reserved

*Features and information deemed reliable but not guaranteed.*